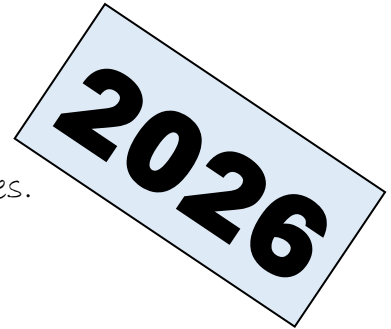




On behalf of the President and Members of the Robina Garden Club the Executive Committee would like to welcome you to our group.

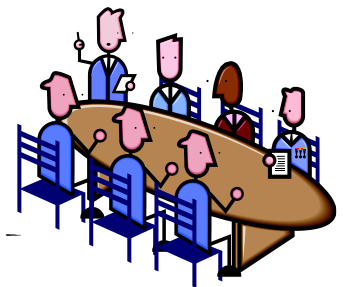
As an introduction to the club this kit contains -

- This general welcome to the Club which lists the **major benefits** you have gained by joining the club.
- Our **Information Brochure** detailing the club's activities.
- Our **Calendar of Events** for 2026.
- How our **website** is constructed.
- How to sell plants through our **Sales Table**.
- Our **2026 Benching Competition Rules**



For more up to date information please visit our website at -

www.robinagardenclub.org.au



First though, a few general bits of information about the Club -

- The Club was founded in October of 1994.
- We meet the last Thursday of each month (excluding December).
- We meet at the **CARRARA COMMUNITY CENTRE** with the doors opening at 12.00 p.m. or once volunteers have set up the hall.
- **MAKE SURE YOU SIGN IN AS YOU ENTER - OTHERWISE OUR INSURANCE WILL NOT COVER YOU!**
- At around 12.30 voting begins in our Benching Competition so most people arrive between 12.00 p.m. and 12.30 p.m. for the start of the formal part of the meeting at 1.00 p.m. Our meetings finish at roughly 3.00 p.m.
- You'll find the Membership Secretary, Treasurer and Secretary sitting in a group at the back of the hall. Look for the signs.
- Those bringing in plants or cuttings for sale or bringing items for our Benching Competition bring those things in with them as they arrive.
- At the end of 2025 we had 119 members.
- A Birthday/Anniversary Meeting in October sees 'Long Service Medals' awarded to those who have been in the Club for 10, 15, 20, 25 & 30 Years.



This Induction Pack is being printed by the office of the Honourable LEON REBELLO M.P. Federal Member for McPherson. Contact Leon at
- Leon.Rebello.MP@aph.gov.au

With our Thanks



BENEFITS OF CLUB MEMBERSHIP

1. New members pay a one-off **Joining Fee of \$30**. This exempts them from that calendar years Annual Administration Fee.
2. For existing members, the **Annual Administration Fee is \$25**. This is due for payment in January or February. This entitles Members -
 - To a **Free Entry** to each meeting.
 - A free **Afternoon Tea** each meeting.
 - A free printed monthly **Newsletter** (also on our web-site).
 - To attend our monthly **Home Visit**. This social event is held at a member's garden. (See Newsletter for details of when/where).
 - To attend our **AGM Lunch** in June and our **Christmas Party** in December at a discounted rate. (For 2025 for example the Christmas Party discount for members was \$10)
 - A discount on any **Bus Trips** if they are applicable.
3. In addition you are eligible each meeting -
 - To win the monthly **Lucky Door Prize** of \$10 if you have been 'signed' in.
 - To enter the **Benching Competition**. A set of the Benching Rules follows. The winner in each of the 10 Benching Sections wins a \$5 cash prize handed out on the day. There is also a \$5 Stewards Prize each meeting.
 - To win the **Benching Raffle** (\$10 prize per month) if you enter items in the Benching Competition. *(Make sure you collect a ticket from the Benching Steward. Just ask).*
 - To win the **Cuttings Table Raffle** (a \$10 prize) if you donate to that table. *(Collect a ticket from that Co-Ordinator).*
 - To sell items through our **Sales Table**. This is gardening items and quality plants that you have grown and want to sell. You determine the price. The club keeps 10% of the sales. *(A flyer explaining how to present your plants and how the process works follows).*
4. Members also receive e-mail copies of our Newsletters, Home Visit, Last Meeting and Bus Trip **Reports** and can join our **FACEBOOK PAGE** (see the Secretary for how to do that).
5. Our Club is a non-profit organisation. It operates mainly on a Cash Payments model (e.g. for raffles, plant sales, etc.) but does have **DIRECT DEBIT** for larger sums such as Bus Trips or our annual Administration Fee. **It does not currently have EFTPOS facilities.**





- **Our Club has around 120 members and welcomes new members interested in gardening.**
- Relatives, friends and potential members **are welcome to attend one of our meetings free of charge.** For potential members, that time is to assess whether the Club suits your needs.



MEETINGS

- Once per month (except December).
- Meetings are the last Thursday of the month.
- From 12.00 p.m. to 3.00 p.m. at the Carrara Community Centre, Nielsens Road, Carrara.
- We issue a **CALENDAR OF EVENTS** listing meeting dates and major events for the whole year.

FEES AND CHARGES

- **JOINING FEE**
- New members pay a one-off joining fee of **\$30**.
- This exempts them from the Annual Fee for that calendar year.
- The **ANNUAL ADMINISTRATION FEE** is **\$25** per calendar year paid by existing members in January or February.



INFO SPOTS

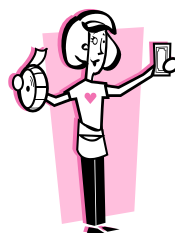
A major aim of the Club is to **exchange information** e.g. by –



- Members explaining how/where they grow the plants entered on the Competition Table during our Benching results.
- Gardening specific items in the monthly Newsletter.
- **'Q and A' sheets** on the benching table. These allow members to ask specific questions they want answered – we then try to find some-one who has the answer.
- A **Top 5 Hints of the Month** presented during the meeting and before afternoon tea.

RAFFLE

- Each meeting we have a raffle with multiple prizes. Tickets are \$2 or 3 for \$5.
- The raffle is a major fundraiser for the club and helps pay for three \$10 monthly prizes and our free afternoon tea.



SOCIAL EVENTS

The Club has 2 major social events each year to promote friendship and club spirit, namely our **AGM LUNCH** and a **CHRISTMAS PARTY** in December - both subsidised for members using funds raised during the year.

AGM

- Our AGM is held at the June Meeting with all **EXECUTIVE COMMITTEE** positions up for re-election.
- The Committee currently consists of the President, Secretary, Treasurer and 2 others.
- Nominations for various **VOLUNTEER POSITIONS** (e.g. Welfare Co-Ordinator, Kitchen Co-Ordinator, Raffle Prize Buyer, etc. etc. are taken leading up to the AGM.)
- After the AGM we have our **AGM LUNCH**.
- Members get a subsidy for this AGM Lunch.

MEETING PRIZE DRAWS

- Three \$10 Prizes are awarded per meeting.
- \$10 for a **Lucky Door Prize** – your sign in number determines who wins.
- \$10 for a **Cuttings Table Raffle** where each person who brings cuttings get a free ticket.
- \$10 for a **Benching Raffle** where each person who brings an entry gets a free ticket.

FACEBOOK

- We have our own Facebook group that shares photos and the like as another way of keeping in touch and sharing ideas.
- Membership is open only to Robina Garden Club Members.
- Once a member you can join by seeing our **Secretary** directly at the front desk before any meeting.



This brochure is being printed by the office of the Honourable LEON REBELLO M.P. Federal Member for McPherson. Contact Leon at Leon.Rebello.MP@aph.gov.au

With our Thanks

BUS TRIPS



- We average 2 bus trips per year.
- Costs can range from \$30-\$65 depending on whether lunch is included and on the cost of entry to venues visited on the day.
- Destinations vary – some are of general interest while others are directly gardening related e.g. gardens, plant shows, nurseries and the like.
- Buses usually leave at 7.30 a.m. – 8.30 a.m. from the Carrara Community Centre.
- We get back home to the Community Centre roughly around 4.00 to 6.00 pm.

CUTTINGS TABLE

- Each meeting members donate to our Cuttings Table.
- Donations include plant cuttings, potted plants and garden books – all for sale to other members.
- Prices are kept as low as possible.
- This is another excellent way of finding out what grows well here.
- Always feel free to track down the donor to discuss the growth habits of each plant.
- Donors to the trading table get a free ticket in a '**donor's raffle**' draw with a \$10 monthly prize.



SALES TABLE

- Our SALES TABLE is where members can sell plants they've potted up plus no longer needed garden items.
- The seller determines the price with the club keeping 10%.
- The Co-Ordinator there has a 'flyer' that details how the process works.



GUEST SPEAKERS

- Meetings include a half hour spot allocated to a **GUEST SPEAKER** (except our AGM and Birthday Meetings).
- These speakers are experts in their field and most include question and answer sessions.
- Often they have plants or garden products for sale.

BENCHING COMPETITION

- At the front of the hall we set up a number of tables for members to display items from their gardens.
- This is another major avenue for those new to the Gold Coast to see what grows well here – and to approach the owners for advice on how/where to grow that plant.
- Items are entered under 10 categories e.g. a 'foliage only plant', a 'monthly feature', a 'decorative display'.
- Everyone at the meeting then casts a vote for which item they consider is the '**best example**' for that category for that day.
- The winner of each sections gets a \$5 prize awarded at the meeting.
- There is also a \$5 Stewards Prize for the item they think should have won but didn't!
- Winners also gain points towards an **Annual Trophy** presented at our Christmas Party. (\$50 for first, \$30 for second and \$10 each for two Encouragement awards.
- Entrants also get a ticket in their own '**exhibitors raffle**' (a \$10 prize) draw.



HOME GARDEN VISITS

- Each month members offer their garden for a Home Garden Visit.
- They are held on the second Friday of the month at 10 a.m.
- It includes morning tea – members **bring a plate to share** plus their own chair, hat and sunscreen.
- The club provides tea/coffee/milk/sugar and cups.
- A **Home Visit Report** about that garden is e-mailed out a few days later for those unable to attend that day
- **They are a powerful 'see and do' tool for those new to the Gold Coast. Seeing what plants grow well in this climate and, importantly, where and how home owners grow them is a very valuable outcome of these days.**



NEWSLETTER

- Members receive a free monthly Newsletter kindly printed for us by local federal member Karen Andrews
- It includes club news as well as garden hints and general interest items about gardening.
- Past and present Newsletters are also found on our web-site.
- **Visitors are most welcome to take a copy of any spare recent newsletters with them.**





This Calendar of Events is correct as of publication date, but changes are inevitable. Such changes are published in our Newsletter, on our website, via e-mail and on our Facebook page.

MONTH	HOME VISIT	MEETING DATE	MONTHLY FEATURE	OTHER ACTIVITIES
January	NO HOME VISIT	Thursday 29 th	Fern/s	
February	Friday 13 th	Thursday 26 th	Coleus	
March	Friday 13 th	Thursday 26 th	Bromeliad	
April	Friday 10 th	Thursday 30 th	Hibiscus/Roses	
May	Friday 8 th	Thursday 28 th	A Garden in a Pot	
June	Friday 12 th	Thursday 25 th	AGM / LUNCH (No benching this month)	
July	Friday 10 th	Thursday 30 th	Anthurium	
August	Friday 14 th	Thursday 27 th	Begonia	
September	Friday 11 th	Thursday 24 th	Hippeastrum	
October	Friday 9 th	Thursday 29 th	Foliage Display	BIRTHDAY PARTY
November	Friday 13 th	Thursday 26 th	Desert Rose	
December	NO MEETING or HOME VISIT CHRISTMAS PARTY (Date to be decided*)			

* The date for the Christmas Party and the names of the monthly Guest Speakers are published in the Monthly Newsletter and on the Web-Site. Bus Trip dates are still to be decided and can be entered on the above chart once they are determined.

All payments (Annual Fee, Bus Trips, Lunches etc.) can be paid by DIRECT CREDIT to the - Bank of Queensland BSB 124-015 Acc. No. 10368149
Name yourself clearly!

CONTACT US

Contact us and keep up to date via our web-site at –

www.robinagardenclub.org.au

Contact us via direct e-mail at –

info@robinagardenclub.org.au

Or phone one of the Executive -

President Denise @ 0412 668 193.

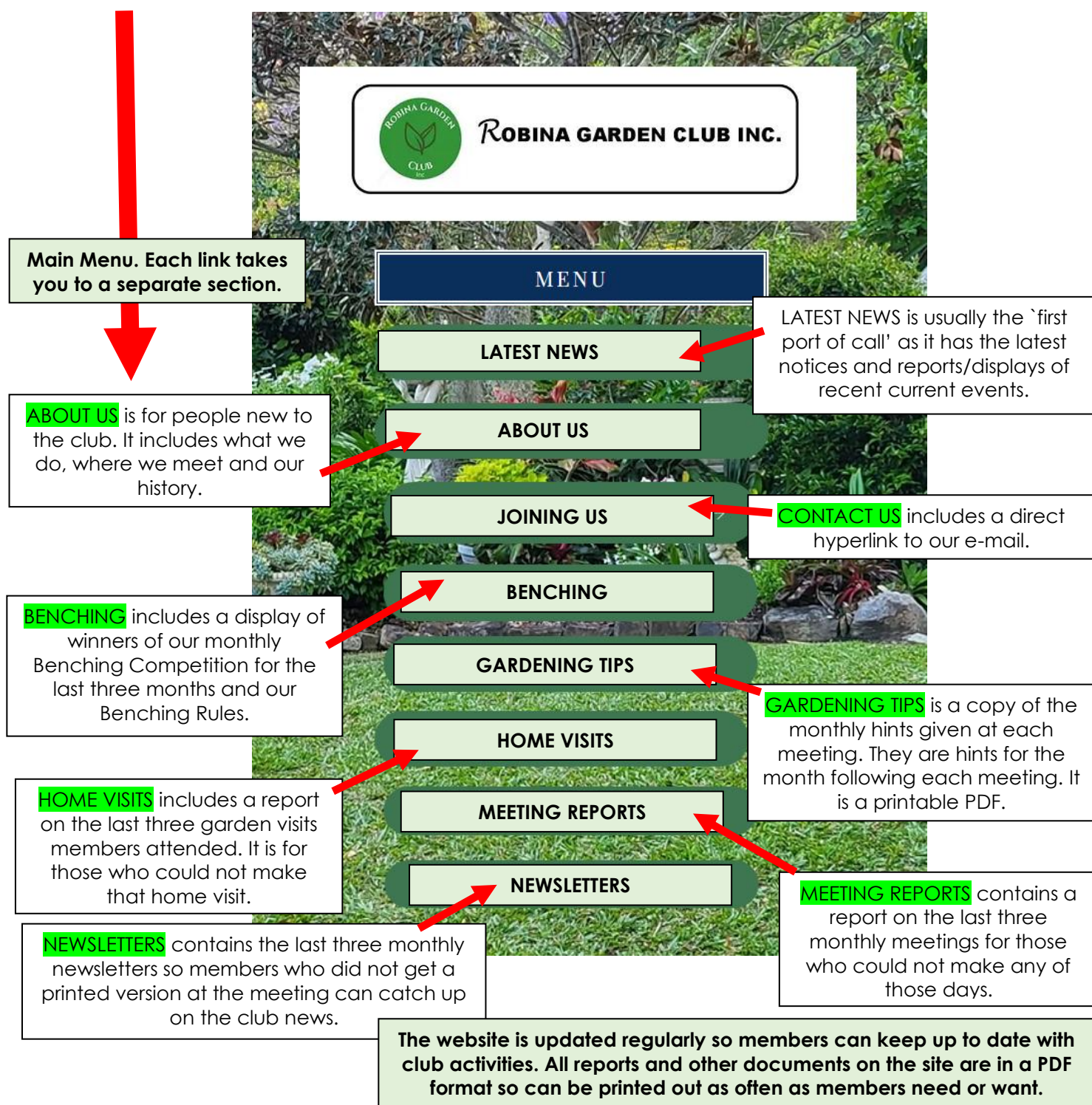
Sec. Val @ 0416 222 539 / Treas. Trevor @ 0434 251 858.



OUR WEBSITE

1. Our website is www.robinagardenclub.org.au
2. It is available on mobile phones, tablets and computers.
3. The MENU is as follows –

Navigation is just by clicking each icon.



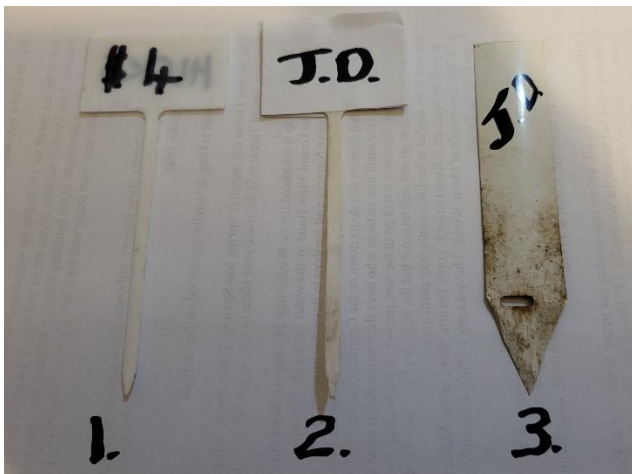
www.robinagardenclub.org.au



ROBINA GARDEN CLUB INC

SALES TABLE PROCEDURES

1. The ROBINA GARDEN CLUB Inc's **SALES TABLE** allows members only to sell garden plants or garden related items (bird baths, tools, decorative statues etc. etc.) to other members.
2. The **SALES TABLE CO-ORDINATOR** is responsible for implementing this process as per these procedures. Any dispute about that process must be directed to the President for resolution.
3. The Robina Garden Club charges a **10% COMMISSION** on all sales.
4. The Sales Table Co-Ordinator will notify sellers when their funds are available. This most likely will be at the next monthly meeting.
5. All items sold must be in a **RETAIL READY** state e.g. 1. plants must have roots and have been growing successfully for some time before being offered for sale e.g. 2. Items should not be dangerous in any way.
6. The Seller is responsible for handing to the Sales Table Co-Ordinator when they arrive with items to sell a completed **SALE TABLE RECORD** (see the Sales Table Co-ordinator to get copies of this record).
7. The **SALES TABLE VOLUNTEERS** on duty handle the sales process as they deem appropriate. Sellers are **NOT** involved in the sales process.
8. A **MAXIMUM OF 12 ITEMS** can be offered for sale at each meeting by each seller.
9. All items must be **CLEARLY MARKED** with the following information



- a. The **SALES PRICE**
 - b. In **WHOLE DOLLARS** only. (i.e. no cents)
 - c. Make it **AS LARGE AS POSSIBLE** so it is easy for buyers to see.
 - d. On a **SALES TAG**. Either a commercial one (1 and 2 at left) or part of a plastic container cut to shape. (as 3 at left).
 - e. On the reverse of each TAG the seller must put their **SELLER'S INITIALS** (Christian & Surname).
 - f. Again make as large as possible to help sales staff to process your sales.
10. You may also add a **PLANT INFORMATION LABEL** if you think that will help sell your plant/item or help the buyer in deciding where to use your item.
 11. Such labels should also be **EASY TO READ** as they will go home with the buyer. (Note - *The volunteers on the sales table are not able to verify the accuracy of such information*).

When notified by the Sales Table Co-Ordinator sellers should go and collect their sale funds AND a new Record Sheet for next month.



ROBINA GARDEN CLUB INC.

BENCHING RULES FOR 2026



Each meeting the Club holds a BENCHING COMPETITION. This involves members bringing along examples of things from their garden in 10 categories.

1. The Benching Competition is only open to financial members of the club.
2. Up to **a maximum of 2 entries** per member **per section** is permitted.
3. Entries are to be benched before 12.30 p.m. **Late entries will be rejected.**
4. Entrants are responsible for putting their name on a piece of paper (upside down) under each entry. If you can, name the entry also.
5. Place your entry in the correct section but its final placement is decided by the Stewards so that all exhibits are fairly displayed.
Under no circumstances should an exhibitor shift other entries.
6. Collect a ticket from the stewards to enter the **EXHIBITOR'S RAFFLE**. Prize = \$10.
7. There are ten sections available for entries –

SECTION 1	-	Monthly Feature
SECTION 2	-	Orchid
SECTION 3	-	Foliage Plant/s
SECTION 4	-	Flowering Plant/s
SECTION 5	-	A Single Bloom
SECTION 6	-	Produce
SECTION 7	-	Multiple Blooms (Cut)
SECTION 8	-	A Vase of Flowers
SECTION 9	-	Small Pot Plant/s
SECTION 10	-	Creative Display
8. The 'rules' governing entries into each section are attached. The Stewards use these to decide if an entry is a valid entry or has to be removed/shifted.
9. Members and visitors judge the entries with one vote per section.
10. There is a \$5 prize for each of the ten winners plus a Stewards Prize. (If there is a tie after members have voted the Chief Steward selects one as the winner).
11. Members **must have owned any potted plants for at least 3 months** – i.e. we are not judging the ability of Bunnings to grow plants!
12. In the case of 'pots' a **winning entry cannot be re-submitted for at least 3 months**. This is designed to ensure no one pot plant dominates month after month and gives others a chance to win.
13. This does not apply to 'cuts' – for example a second rose from the same tree counts as a different entry and thus can be submitted next month.
14. Points (3 for 1st, 2 for 2nd) are recorded monthly then totalled towards the Annual Trophy awarded at our Christmas Party. (Champion = \$50, 2nd = \$30 and 2 x \$10 Encouragement Awards.)
15. The Stewards keep a record of how many entries each person submits during the year – this number helps decide who deserves an Encouragement Award.



The Benching Officials only are responsible for the final positioning of all entries for judging. In the event of a dispute the President has the final decision.

"Show and Tell" is a non-competitive section and is for discussion and interest only. Members and visitors may bring unusual plants, displays that don't fit one of the categories or problem plants to stimulate discussion or to enhance members' general knowledge of gardening/plants.

ROBINA G.C. BENCHING - ENTRY CRITERIA – 2026 COMPETITION

SECTION 1 Monthly Feature	<ul style="list-style-type: none"> A different type of exhibit each month and revised each year, designed to encourage diversity in our gardens. Items named for the monthly feature cannot be entered into or used in any other sections for that month (except in the Creative Display). See Monthly Features page that follows for the full details.
SECTION 2 Orchids	<ul style="list-style-type: none"> Orchid/s of any type - e.g. swamp, ground, epiphytic, native, etc. It can be one or more plants in/on a growing medium e.g. in a pot, on a piece of wood, etc. or a vase of orchids. Exhibit must have been owned for more than 3 months by the exhibitor. Orchid plants/vases of orchids cannot be exhibited in any other section.
SECTION 3 A Foliage Plant/s	<ul style="list-style-type: none"> One or more plants in/on a growing medium. Can be in or on a 'container' of any type e.g. a pot, on a piece of wood, etc. The pot is to be 20cm or above as measured by the growing surface. The plants must not be in flower or in bud/berries so are being displayed for the (unaltered e.g. not polished) quality of their foliage. Exhibit must have been owned for more than 3 months by the exhibitor and not won this section in the last three months.
SECTION 4 A Flowering Plant/s	<ul style="list-style-type: none"> One or more plants in/on a growing medium. Can be in or on a 'container' of any type e.g. a pot, on a piece of wood, etc. The plant/s must be in flower or with berries. If a plant is 'in bud' it should also be displayed in this section. The pot is to be 20cm or above as measured by the growing surface. Exhibit must have been owned for more than 3 months by the exhibitor and not won this section in the last three months.
SECTION 5 A Single Bloom.	<ul style="list-style-type: none"> A 'single bloom' from your garden taken from any one plant that you have owned and have been growing for at least three months. 'Single bloom' refers to flower heads that are visually a single flower e.g. a Rose, a Hibiscus, a Grevillea, a Daisy, an Anthurium, etc. Blooms should have a single stem with or without leaves attached.
SECTION 6 Produce	<ul style="list-style-type: none"> A collection of produce e.g. Lettuce, Tomatoes, Herbs, etc. grown in your garden. They can be displayed in any way you think best. Anything grown and available for culinary, medical, cleaning or other household/domestic use. Can be one type or a collection of things. The produce must be from plants that have been growing in your garden for at least three months.
SECTION 7 Multiple Bloom/s (Cut)	<ul style="list-style-type: none"> A 'cut' from your garden taken from any one plant that you have owned and have been growing for at least three months. 'Multiple Bloom/s' can be two or more single blooms on a branch or a single flower head that is a cluster of smaller blooms. This includes such things as a Hippeastrum, a Crepe Myrtle, Agapanthus, flower spikes such as Asters, rambler type Roses, etc.
SECTION 8 A Vase of Flowers.	<ul style="list-style-type: none"> A Vase of Flowers all of which have been grown in your garden. Position them to their best advantage e.g. tallest in the middle etc. Can be any type of vase – presented as you would present them at home. You can put the vase on a base of some type. Can be any mix of flowers you have e.g. one type, different colours, different types, etc. (Can include 1 Orchid cut only).
SECTION 9 A Small Pot Plant/s	<ul style="list-style-type: none"> A 'small pot plant/s' 18cm or less in diameter as measured by the growing surface and less than 11cm high. Can be plant/s of any kind (except Orchids) and in flower or not. The plant can have attached suckers, offsets and the like. Entries in this section must have been owned by and been grown by you for at least three months.
SECTION 10 Creative Display	<ul style="list-style-type: none"> Designed to demonstrate the entrants 'creativity/imagination'. Could be for example a Floral Arrangement, A Dried Arrangement, an 'Art Installation' or any display that uses 'the garden' as inspiration. The Chief Steward has the right to reject an entry the Stewards feel does not meet these criteria of being 'garden inspired'.



BENCHING COMPETITION 2026

MONTHLY FEATURES.

JANUARY	Fern/s <ul style="list-style-type: none"> A fern/s of any type in any type of container e.g. in a pot, on a piece of wood, in an old shoe, etc. Must be from your own garden and have been owned by you for at least three months. Bring your own stand/stool if it is a hanging pot and needs to be put up.
FEBRUARY	Coleus <ul style="list-style-type: none"> A collection of coleus cuttings displayed as you wish in a vase or container of any type. Can be a 'pot' of Coleus plants. Can be one type only or a collection of different types of Coleus. Must be from plants you have been growing for at least three months.
MARCH	Bromeliad <ul style="list-style-type: none"> All Bromeliads must be entered in this section this month. Includes Bromeliad species of all types e.g. Tillandsias, Guzmanias, etc. Must be one single type of plant (however can include pups) which can be in a growing medium of any type or on a log etc. Leaves cannot be manipulated e.g. polished, waxed, etc.
APRIL	Hibiscus and/or Roses <ul style="list-style-type: none"> A single Rose or Hibiscus or a collection of Hibiscus and/or Roses from your own garden. They can be presented with or without leaves. Must be from plants you have been growing for at least three months. Can be displayed in any type of container/vase.
MAY	A Garden in a Pot <ul style="list-style-type: none"> Two or more different plants arranged or growing in any sized single container and arranged to represent a 'garden scene'. No artificial plants allowed but can include 'paths'/'fences' etc. Must be a 'garden' that you planted up at least three months ago.
JUNE IS OUR AGM/LUNCH. NO COMPETITION IN JUNE.	
JULY	Anthurium <ul style="list-style-type: none"> A single Anthurium plant growing in any type of container/pot. Can include 'pups' still attached to the parent plant. Could also be a vase full of different anthurium flowers. Must have been owned by you for at least three months.
AUGUST	Begonia <ul style="list-style-type: none"> A Begonia of any type growing in/on any type of container or pot. Plant and its 'offshoots' can be as large as you like provided it is one type. With or without a flower. Must have been owned by you for at least three months.
SEPTEMBER	Hippeastrum/s <ul style="list-style-type: none"> Can be one or more hippeastrums in a pot, a vase full of cut hippeastrum flowers or a single hippeastrum bloom in a vase. Can be any variety or type of hippeastrum. Must be from plants you have owned for at least three months.
OCTOBER	Foliage Display <ul style="list-style-type: none"> A collection of different types of foliage from your own garden. Can be presented in any way you wish – in a vase, on a tray, etc. etc. The leaves can be manipulated to enhance their presentation e.g. stapled into shape, trimmed, polished with milk, etc. etc.
NOVEMBER	Desert Rose <ul style="list-style-type: none"> A desert rose in a pot or a cutting from one of your yard plants. Can be judged on the flowers or on the 'caudex' – that water holding 'bulge' at the bottom of the plant. Can be any size pot or cutting. Leaves cannot be manipulated e.g. polished, waxed, etc.